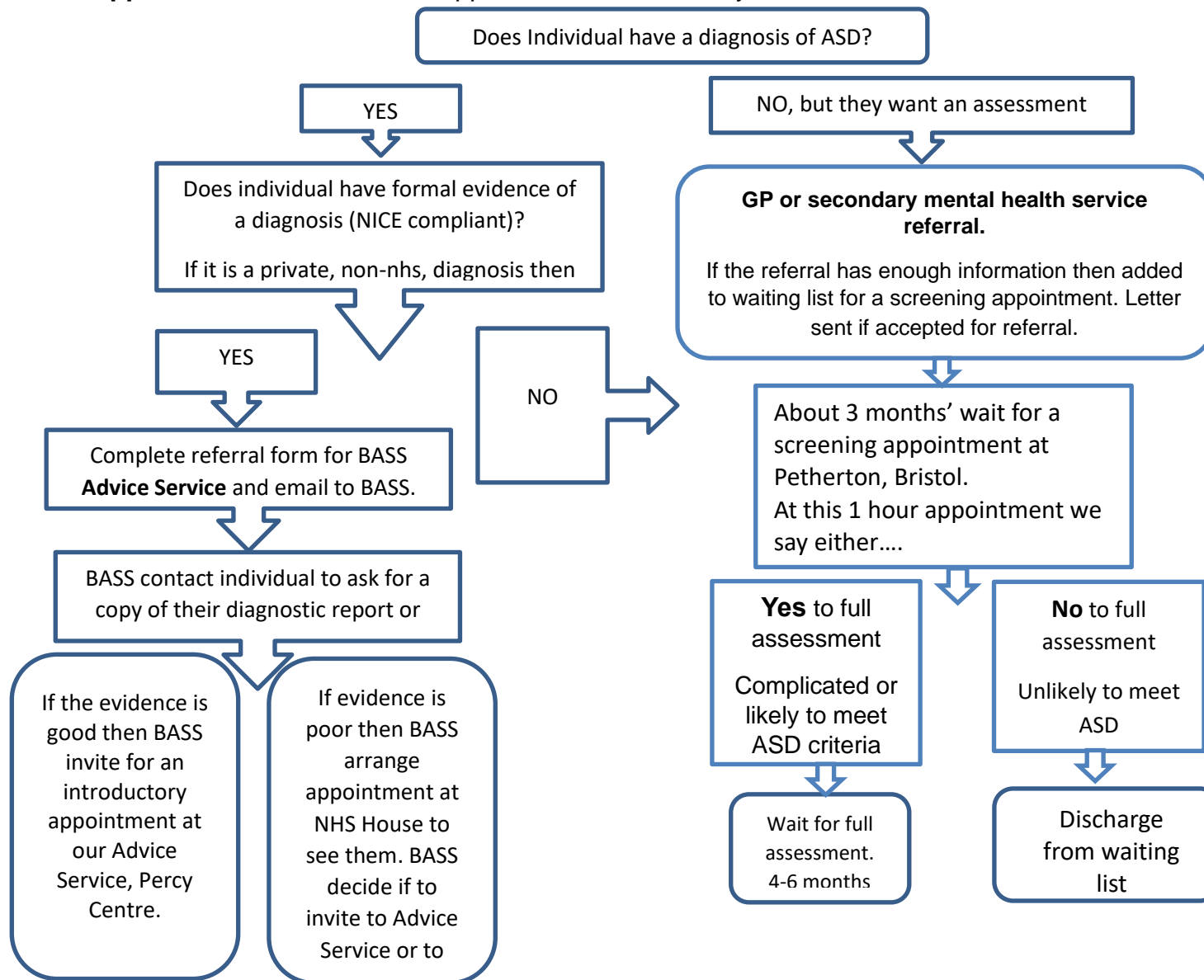


ASD Diagnostic Pathway for 18+ years

Appendix 3: Flowchart and Support Services offered by BASS



Transitions

When a child turns 17 years and already has a diagnosis of ASD either through CAMHS or SALT services that is NICE compliant, (using NHS diagnostic Protocols) they can arrange up to 4 visits for 12 months to introduce themselves to the service i.e. visit BASS Offices, meet professionals. At 17 years and 9 months they can be referred to the service

Groups

Post-diagnostic group

6 week course, 2 hours each week for adults with ASD. 3 courses per year. Mixture of information about ASD and discussion topics. 5-10 people per group.

Problem-solving Group 3 – 4.50pm.

On-going, every week, drop-in. Casual group with some structure where people can bring problems to discuss with other people with ASD. Usually 5-10 people.

Relaxation 4- 4.15pm

Follows after the problem-solving group every week if enough people interested. Facilitator takes through body relaxation techniques and breathing.

Social Links. Every last Wednesday of the month 1-3pm

A different speaker each month talking about the community service they provide.

Stress Management

About 3 times per year. 1.5 hours each session for 3 weeks. Educational course with discussions too. About how to recognise and deal with anxiety. About 5-10 people.

Workshops. 2 hours. Each one runs about 3 times per year. Educational and discussions;

Sensory

Executive functioning

Friendships

Relationships

BASS AUTISM ADVICE SERVICE 18+ years

Services available after introductory appointment

1-1 appointments

Appointments can be for a number of different reasons. They can be arranged by emailing or calling us and asking for one (if you have already had an intro apt). Examples of reasons people want a 1-1;

- Problem-solving
- Emotional
- ASD specific questions
- with carer or relative
- Employment Advice with our employment advisor,
- Social prescribing with our social prescriber,
- Signposting or referring to other agencies, for example:
- Citizens' Advice Bureau for benefits advice
- Meet with Virgin care Autism Social Care team and service for social needs assessment and case management.
- ADHD team Bristol
- Banes Talking Therapies
- Employment support teams
- Student disability services

